

# Water Resource Management Committee Meeting Agenda

---



October 14, 2025 - 4:45 PM  
Council Chambers  
3805 S. Casper Drive

*Published: 10.13.2025 @ 10:40 AM*

## AGENDA

1. **CALL TO ORDER**
2. **ROLL CALL; DECLARATION OF QUORUM; PUBLIC NOTICE**
3. **APPROVAL OF MINUTES**
  - A. July 8th, 2025 Meeting Minutes
4. **INFORMATION**
  - A. Overview of August 9-10, 2025 Storm Event
5. **NEW BUSINESS**
  - A. WRM 03-25, Discussion and possible recommendation to Common Council action on Flood Plain Property Purchase
  - B. Discussion and possible action to recommend to Common Council the 2026 Water Resource Management Operating Budget
6. **ADJOURN**

### Additional Information

- The agenda packet, including supplemental information related to agenda items, is available online at [www.NewBerlinWI.gov](http://www.NewBerlinWI.gov). Once finalized by the governing body, approved meeting minutes will also be posted online.
- Agenda items may be taken out of order at the governing body's discretion.
- Members, and possibly a quorum, of other municipal governmental bodies may attend this meeting to gather information. However, no action will be taken by any governmental body other than the one referenced in this notice.
- Accommodations will be provided under the Americans with Disabilities Act (ADA) to meet the needs of individuals with disabilities. If you require assistance or appropriate aids and services, please contact the Office of the City Clerk at (262) 786-8610 with reasonable notice.

# Water Resource Management Committee MEETING MINUTES

---



July 8, 2025 - 4:45 PM  
Council Chambers  
3805 S. Casper Drive

## MINUTES

### 1. CALL TO ORDER

Alderman Harenda called the meeting to order at 4:45PM

### 2. ROLL CALL; DECLARATION OF QUORUM; PUBLIC NOTICE

Joelle Erickson took the roll call as follows:

Present: Alderperson Hopkins, Alderperson La Fever, Mayor Ament, Commissioner Kern, Alderperson Harenda

Staff Present: Water Resource Assistant Manager Joe Bevington, Parks Buildings & Grounds Josh Fabian, Community Relations Specialist Joelle Erickson

It was confirmed that a quorum was present and that the meeting was properly posted in compliance with open meetings law.

### 3. APPROVAL OF MINUTES

#### A. November 12, 2024 Meeting Minutes

**MOTION:** Motion to Approve Minutes

**VOTE:** Motion by: Mayor Ament  
Second by: Commissioner Kern  
Motion Passes 5-0

### 4. NEW BUSINESS

#### A. Discussion and possible action to recommend to Common Council approval of Kelly Lake Pier Funding.

**MOTION:** Motion to Approve as Presented

**VOTE:** Motion by: Alderman Hopkins  
Second by: Alderman La Fever  
Motion Passes 5-0

### 5. TABLED ITEMS

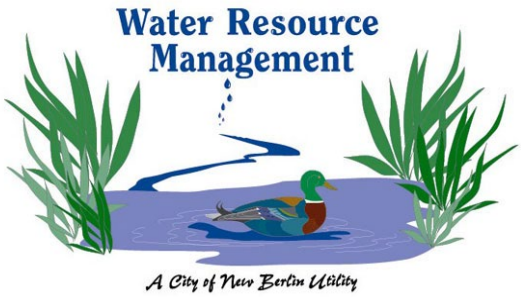
None

### 6. ADJOURN

**MOTION:** Motion to Adjourn at 4:52 PM

**VOTE:** Motion by: Alderman Hopkins  
Second by: Commissioner Kern  
Motion Passes 5-0

**Respectfully Submitted,  
Joelle Erickson, Community Relations Specialist**



**Water Resource Management  
Utility of the City of New Berlin**  
3805 South Casper Drive  
P.O. Box 510921  
New Berlin, Wisconsin 53151-0921

**Engineering Services  
Code Enforcement  
Street Department**

Engineering/Code Phone: 262-797-2445  
Engineering/Code Fax: 262-780-4612  
Street Dept Phone: 262-780-4609

October 14, 2025

**TO:** Water Resource Management Committee

**FR:** Nicole Hewitt, WRM Manager

**ISSUE:** WRM 03-25, Discussion and possible action on Flood Plain Property Purchase

**REQUESTED ACTION:**

Discussion and possible action on Flood Plain Property Purchase.

**FISCAL IMPACT:**

\$242,000

Assessed Imp	Assessed Land	APRTOT
\$ 76,700.00	\$ 114,800.00	\$ 191,500.00
	<b>Totals</b>	<b>\$ 191,500.00</b>
	Demolition	\$ 30,000.00
	Legal and Incidentals	\$ 9,000.00
	Contingencies	\$ 11,525.00
	<b>Estimate Total</b>	<b>\$ 242,025.00</b>
<b>Grant Project Maximum Total</b>		<b>\$ 242,025.00</b>
Max Grant	50%	\$ 121,012.50
City Share	50%	\$ 121,012.50
<b>Additional Funding Required</b>		<b>\$ -</b>
<b>Total City Funding Required</b>		<b>\$ 121,012.50</b>

**SOURCE OF FUNDS**

WRM Utility Account

**RATIONALE:**

We would like to purchase a floodplain property. The property is in floodway and no improvements can be made to the property. We intend to apply for a Grant but there is no guarantee that a Grant application period will open in the timeframe that we are looking to

complete the acquisition. The property acquisition is completely voluntary, and no efforts will be made without the permission of the property owner.

We are looking to move forward in the process with obtaining an independent assessment of the property as well as an environmental assessment.

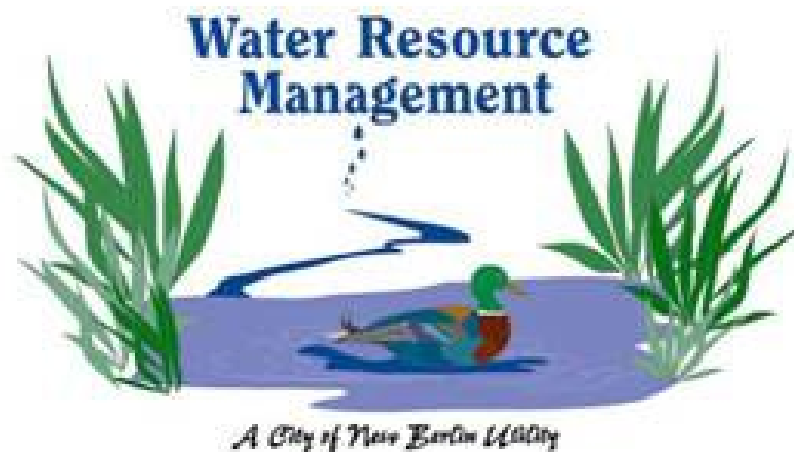
Acquisition of the property would provide open space and potential for future long term stormwater mitigation projects.

## QUOTE COMPARISON

<b>Company</b>	<b>Description</b>	<b>Cost</b>	<b>Cost +Contingency</b>
Lakeshore	100' x 6' Permanent Pier (2) 6'x6' T section at end of pier (2) 6' Benches	\$ 63,560	\$ 70,000
Complete Piers	52' Permanent pier 6' wide (2) 10' Permanent pier 10' wide (2) 10' Complete Synthetic Bench	\$ 62,850	\$ 70,000
Lake Country	Gangway, 4' x 32' (2) Flt Dock, 4 x 24 Alum (2) Flt Dock, 8 x 8 Alum (2) Bench w/Armrest	\$ 55,104	\$ 61,000

# Department of Community Development

*Engineering Services Division  
GIS/LIS Services Division  
Inspection Services Division  
Planning Services Division  
Water Resource Management Utility*



## **2026 WATER RESOURCE MANAGEMENT OPERATING BUDGET**

**Submitted to the Water Resource Management Committee October 14, 2025**

***Prepared for:***

*Mayor David Ament &  
Common Council, City of New Berlin*

***By:***

*Nicole Hewitt, P.E.  
Division Engineer, Water Resources  
October 14, 2025*

*Greg Kessler, Director  
Department of Community Development*

## **2026 DEPARTMENT PERSONNEL**

Gregory W. Kessler, AICP	Director of Community Development
Nicole Hewitt, P.E.	Water Resources Utility Manager
Joseph Bevington	Water Resources Utility Assistant Manager
Dan Hogan	Code Compliance Specialist (Inspection)
Lucas Pichler, P.E.	Director of Public Works
Michael Eder	Assistant Director of Public Works
Jason Bednarz	Streets Supervisor
Cynthia Tesch	Streets/Stormwater Administration
Jim Burns	Emergency Management Manager
Tamara Simonson, P.E.	City Engineer

## ***Vision Statement***

Promote a Three-Dimensional approach to efficiently and effectively manage storm water and to protect the water resource needs of the City of New Berlin.

## ***Mission Statement***

Dedicated to the management, construction, maintenance, protections, control, regulation, use, and enhancement of storm & surface water systems, flood protection, water quality, and groundwater recharge through education, coordination, development, maintenance and management of projects & programs in concert with other community development programming in an efficient and cost effective manner that considers the needs for protection of public health, private property, the natural environment, and economic development.

## ***Responsibilities***

The Utility was established by City Ordinance No. 2147. The activities of the Utility are guided by a comprehensive Storm Water Management Master Plan (SWMMP) completed in 2000 (updated by addendum in 2009), the City of New Berlin 2020 Comprehensive Plan, and by the Water Resources Management Committee.

As part of the 2020 Comprehensive Plan, the SWMMP was updated by addendum. The addendum to the SWMMP updates the Water Resources Management Utility's overall Vision, Mission, Goals and Objectives. The addendum also refocuses the Utility for the next ten (10) years. The following contributed to the necessity of refocusing: new regulatory requirements, the resolution of historical flooding issues, the further degradation of drainage systems, and an increase in reports of localized drainage issues. The objectives of the Water Resource Utility as identified in the SWMMP are as follows:

1. Provide water quality suitable to support the designated potential recreational and biological uses of the streams;
2. Provide storm water drainage and flood control facilities to prevent flood damages to property, prevent health and safety hazards, and prevent drainage-related nuisance and inconvenience;
3. Develop a storm water management system that effectively serves both existing and anticipated future land uses at the lowest practicable cost;
4. Reduce erosion and sedimentation from construction of new development and agricultural activities; and
5. Protect environmentally sensitive areas that provide significant surface water quantity or quality benefits.

## **2025 Department Achievements**

### **Agency Submittals**

- Annual report to MMSD for Chapter 13
- Annual Report to WDNR for WPDES Permit
  - Public Education Partnership for WPDES Education Requirements
  - Illicit Discharge Outfall Screening
- NFIP-CRS Audit

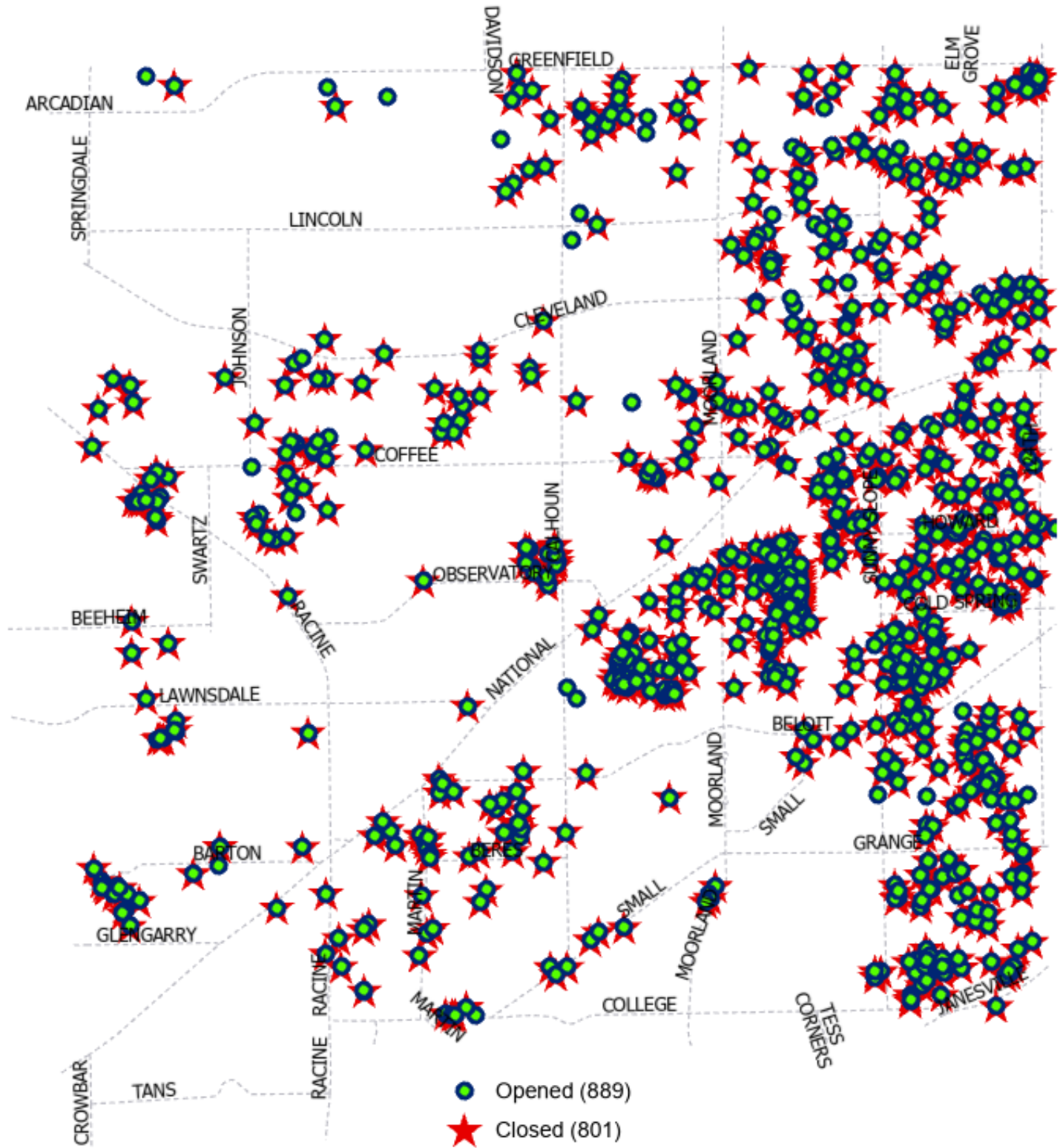
### **Drainage Projects – Contracted Out**

- 130<sup>th</sup>/Cleveland Road at Culvert Repair (due to August Storm)

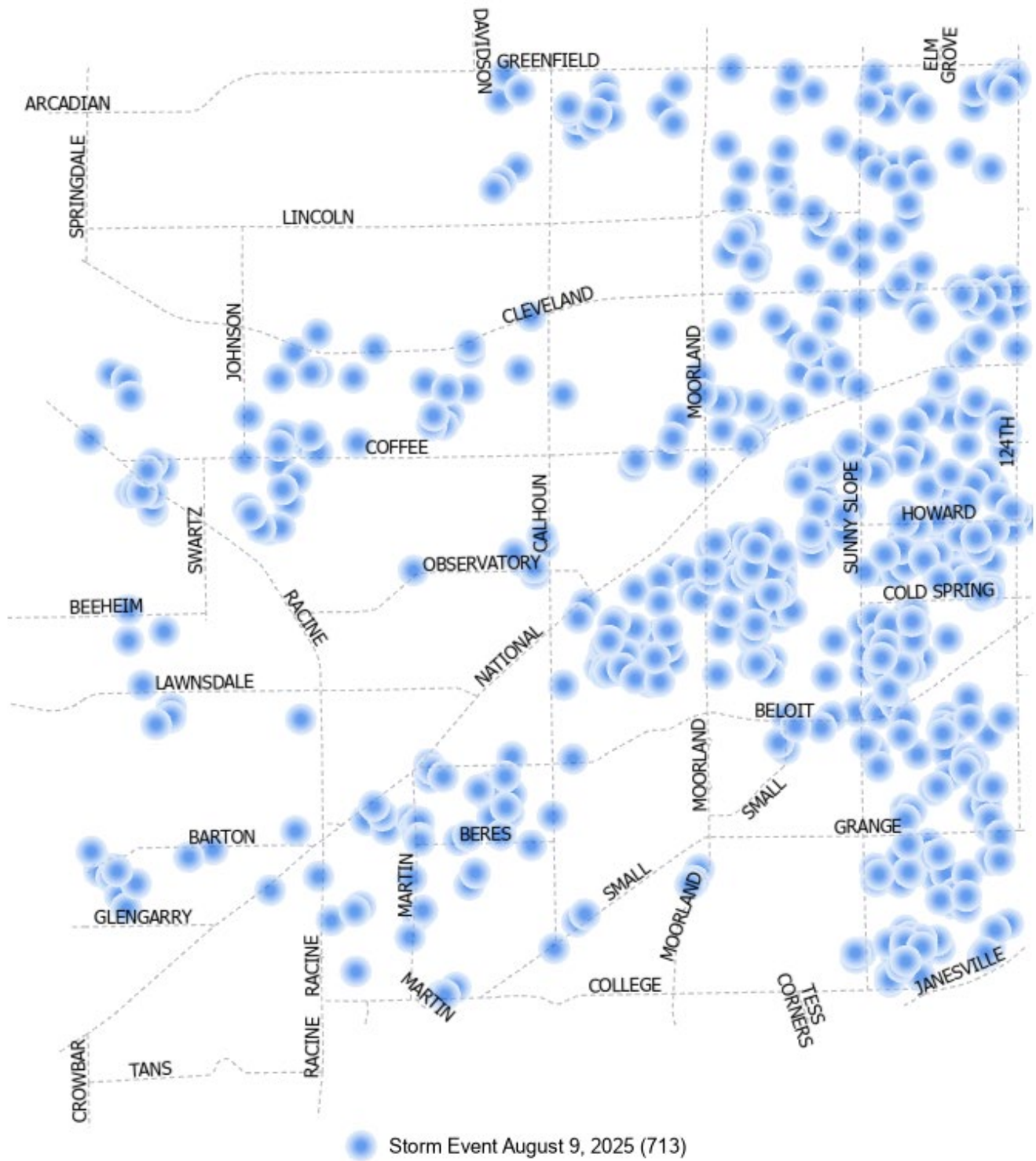
### **Engineering Design Work**

<b>Survey</b>	<b>Design</b>
Brookland Rd	159th St
Calhoun Service Dr	Brookland Rd
Coffee Rd	Churchview Dr
Crestview Dr	Clover Knoll Pl
Glendale Dr	Coffee Rd
Hansen Dr	Crestview Dr
Pickford Ct	Glendale Dr
Rogers Dr	Lincoln Ave
Steven Ct	
Sunny Crest Dr	
Westbrooke Pkwy	

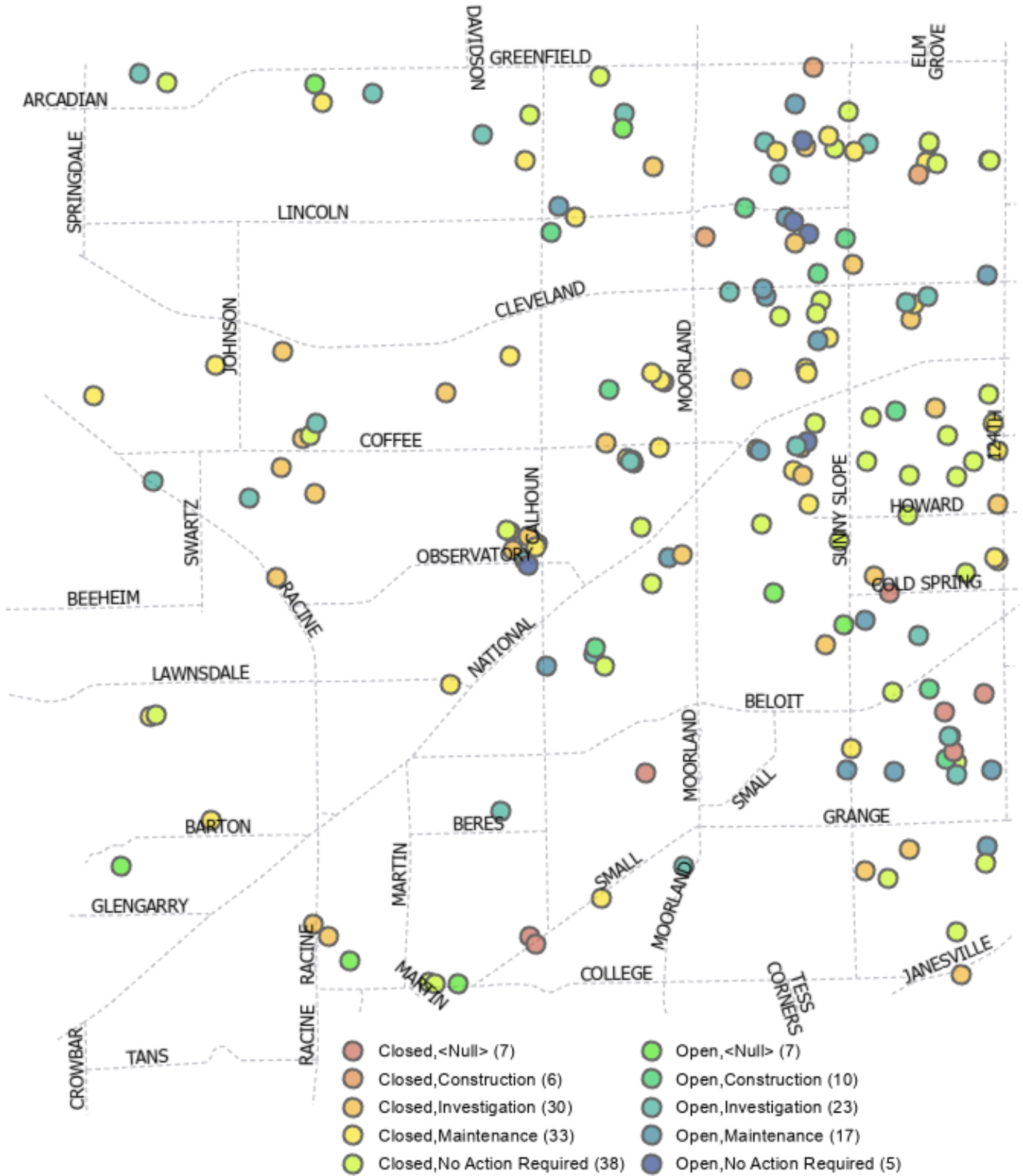
# Drainage Requests (10/01/2024 – 09/30/2025)



# Drainage Requests Related to the August 9-10, 2025 Storm Event



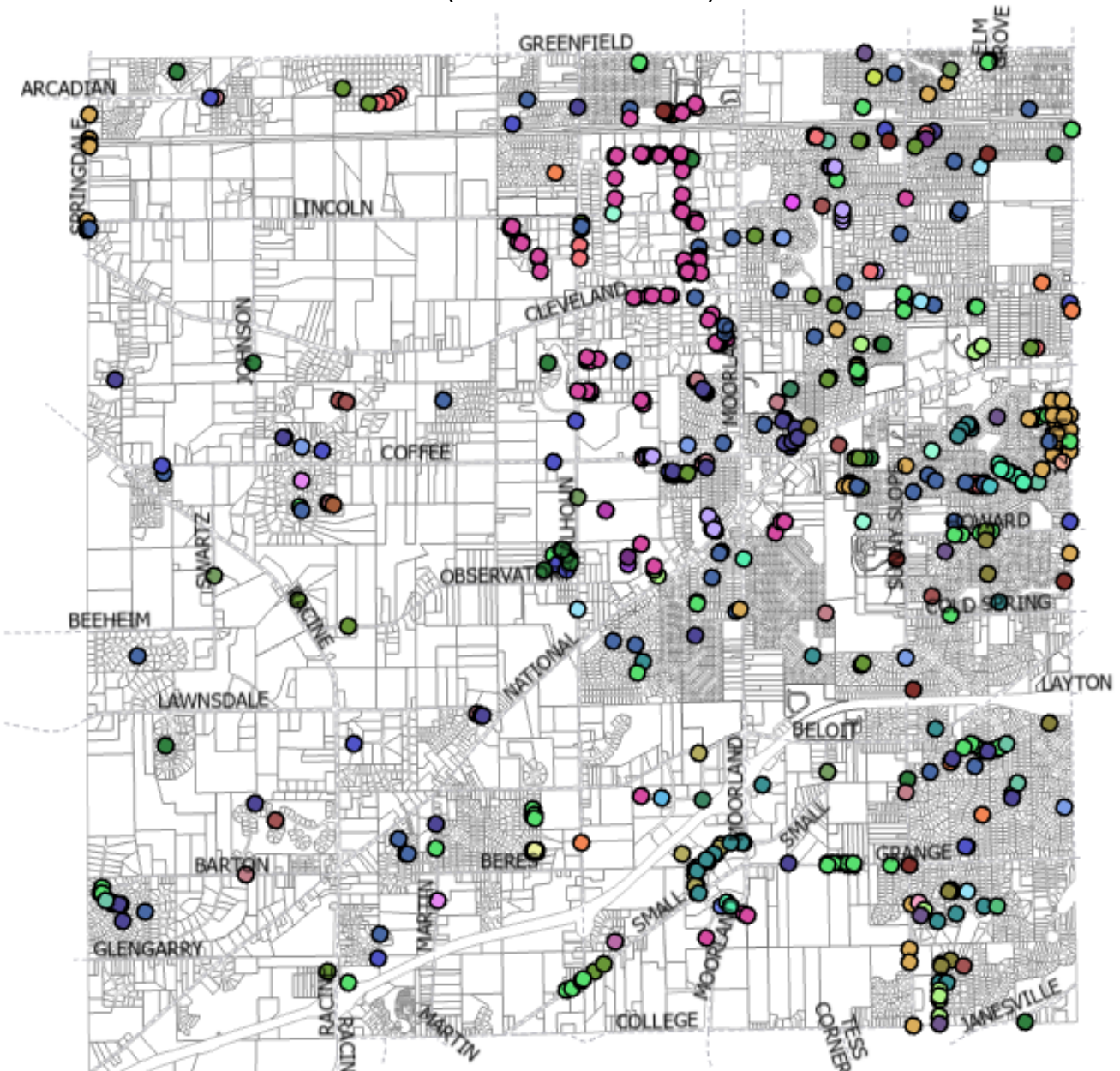
## Drainage Requests Not related to the Storm Event



### Storm Tasks Completed

Activity	#	Activity	#
Cartograph Inspection Storm Culvert	38	Maintain Storm Inlet	1
Cartograph Inspection Storm Inlet	7	Maintain Storm Pipe	1
Cartograph Inspection Storm Outlet	85	Rebuild (Partial) Storm Inlet	51
Clean Storm Channel	71	Rebuild (Partial) Storm Manhole	1
Clean Storm Culvert	30	Remove - Debris Storm Basin	1
Clean Storm Inlet	16	Remove - Debris Storm Channel	18
Clean Storm Manhole	2	Remove Storm Culvert	1
Clean Storm Pipe	3	Repair - Patch Storm Culvert	5
Curb Storm Channel	1	Repair - Patch Storm Inlet	49
Drainage Engineering Design Storm Channel	16	Repair - Turf Restoration Storm Culvert	6
Drainage Engineering Design Storm Culvert	1	Repair - Turf Restoration Storm Inlet	13
Drainage Engineering Design Storm Pipe	1	Repair Storm Channel	33
Drainage Engineering Survey Storm Channel	48	Repair Storm Culvert	11
Drainage Engineering Survey Storm Culvert	1	Repair Storm Inlet	10
Drainage Engineering Survey Storm Pipe	8	Repair Storm Manhole	5
Grade Ditch Storm Channel	32	Repair Storm Pipe	5
Inspect Storm Culvert	52	Replace - Endwall Storm Culvert	5
Inspect Storm Inlet	1	Replace - Lid Storm Manhole	1
Install Storm Culvert	2	Replace Storm Channel	5
Install Storm Inlet	1	Replace Storm Culvert	8
Install Storm Pipe	2	Replace Storm Inlet	3
Maintain - Vegetation Management Storm Channel	1	Steam Frozen Culvert Storm Culvert	22
Maintain Storm Basin	1	Televis Storm Pipe	18
Maintain Storm Channel	4	Tuckpoint Storm Inlet	13
Maintain Storm Culvert	2		
<b>TOTAL = 712</b>			

## Completed Storm Tasks (10/01/2024 – 09/30/2025)



- |  |   |  |
|--|---|--|
| <ul style="list-style-type: none"> <li>● Cartograph Inspection, Storm Culvert (38)</li> <li>● Cartograph Inspection, Storm Inlet (7)</li> <li>● Cartograph Inspection, Storm Outlet (85)</li> <li>● Clean, Storm Channel (71)</li> <li>● Clean, Storm Culvert (30)</li> <li>● Clean, Storm Inlet (16)</li> <li>● Clean, Storm Manhole (1)</li> <li>● Clean, Storm Pipe (3)</li> <li>● Curb, Storm Channel (1)</li> <li>● Drainage Engineering Design, Storm Channel (16)</li> <li>● Drainage Engineering Design, Storm Culvert (1)</li> <li>● Drainage Engineering Design, Storm Pipe (1)</li> <li>● Drainage Engineering Survey, Storm Channel (48)</li> <li>● Drainage Engineering Survey, Storm Culvert (1)</li> <li>● Drainage Engineering Survey, Storm Pipe (8)</li> <li>● Grade Ditch, Storm Channel (32)</li> <li>● Inspect, Storm Culvert (51)</li> </ul> | <ul style="list-style-type: none"> <li>● Inspect, Storm Inlet (1)</li> <li>● Install, Storm Culvert (1)</li> <li>● Install, Storm Inlet (1)</li> <li>● Install, Storm Pipe (1)</li> <li>● Maintain, Storm Basin (1)</li> <li>● Maintain, Storm Channel (4)</li> <li>● Maintain, Storm Culvert (1)</li> <li>● Maintain, Storm Inlet (1)</li> <li>● Maintain, Storm Pipe (1)</li> <li>● Maintain - Vegetation Management, Storm Channel (1)</li> <li>● Rebuild (Partial), Storm Inlet (51)</li> <li>● Rebuild (Partial), Storm Manhole (1)</li> <li>● Remove, Storm Culvert (1)</li> <li>● Remove - Debris, Storm Basin (1)</li> <li>● Remove - Debris, Storm Channel (18)</li> <li>● Repair, Storm Channel (33)</li> <li>● Repair, Storm Culvert (11)</li> </ul> | <ul style="list-style-type: none"> <li>● Repair, Storm Inlet (10)</li> <li>● Repair, Storm Manhole (5)</li> <li>● Repair, Storm Pipe (5)</li> <li>● Repair - Patch, Storm Culvert (5)</li> <li>● Repair - Patch, Storm Inlet (49)</li> <li>● Repair - Turf Restoration, Storm Culvert (6)</li> <li>● Repair - Turf Restoration, Storm Inlet (13)</li> <li>● Replace, Storm Channel (5)</li> <li>● Replace, Storm Culvert (8)</li> <li>● Replace, Storm Inlet (3)</li> <li>● Replace - Endwall, Storm Culvert (5)</li> <li>● Replace - Lid, Storm Manhole (1)</li> <li>● Steam Frozen Culvert, Storm Culvert (11)</li> <li>● Televis, Storm Pipe (18)</li> <li>● Tuckpoint, Storm Inlet (13)</li> </ul> |
|--|---|--|

**System Maintenance and Repair**

- System maintenance is scheduled and completed in coordination with the City Engineer and the City’s 5-year Road Work Plan and the Department of Public Works. See below for current schedule of events.

Road Work	Storm Maintenance	Storm Inspections
2026	2025	2024
2027	2026	2025
2028	2027	2026

**Street Sweeping**

- 300 Miles of Street Sweeping Completed

**Permit Processing**

- Driveway Culverts Permits – 87 (Set grades for contractors and inspected)

**Code Compliance**

- Construction BMP Inspections (Erosion Control) - 24 initial inspections. Sites are inspected at least once a month until completion.
- Post-Construction BMP Inspections

**Utility Fee Investigations**

- Quarterly Reviews of Fee Changes

**Building Permit Reviews**

- Nicole 114
- Joe 44

**Development Review**

- 41 Planning Reviews

Christian Brothers

On Time Promo & Apparel

Hawthorne Hills Farm

Overland Trail Industrial Building

Jewell Homes - 3 Lot Csm

Shorewest

National Avenue Multi-Tenant Building

The Conservancy-Multi-Use Neighborhood

New Berlin Fabrication Building

Trustone

## ***Departmental Overview***

The Water Resources Management Division works, under the oversight of the Water Resource Management Committee, with the management of surface water runoff from urban and rural lands. This Division completes and coordinates design and engineering work for large-scale storm water projects and assists the Transportation Division with the storm water components of road projects.

Several of the projects that were completed in 2024/2025 included:

- construction of drainage improvements along Calhoun Rd
- redesign of concrete invert at Pheasant Run
- design and construction of Malone Park drainage improvements.

In 2025/2026, the Division is designing and reconstructing:

- Wilbur Dr Storm Sewer Extension
- Clover Knoll Storm Sewer Replacement.

The Division also tracks flooding and storm water issues throughout the City and provides construction direction and oversight for City crews. The Division also assists residents with floodplain questions, tracks storm and flood data, and applies and administers state and federal storm water and flood control regulations.

The Division administers the City's WPDES permit for storm water discharges which includes responsibilities for pollution prevention, illicit discharge screening, public education and outreach, construction site pollutant control and post-construction storm water management and represents the City in the Clean Water Network. The Division also performs experimental work with new technologies and natural methods and practices, and promotes Low Impact and Green Development with the goal of eliminating development impact on the environment.



## **ENVIRONMENTAL SCAN**

### **Departmental Strengths**

**Management Principles and Practice.** Management is committed to purposeful quality improvement and opportunities it offers to improve efficiency, reduce costs, and provide customer-focused service.

**Knowledgeable and Dedicated Employees.** Employees in the Water Resource's Utility are dedicated professionals with a high level of integrity and technical knowledge. Staff often respond to storm water situations at a moments notice during rain events. Staff meet with other professionals in the field and attend courses to remain up to date on regulations, practices and technologies to better serve the community and the environment.

**Technology.** The WRM relies on advanced technology to assess infrastructure deficiencies, log drainage complaints, investigate drainage issues and to design solutions. Staff rely on current new technologies when designing projects and working with new development projects.

### **Departmental Weaknesses**

**Aging Systems.** The City's drainage systems continue to be in need of maintenance. Over the years, drainageways have been overtaken by debris, brush and sediment deposits. As we focus on drainage list (complaint driven) projects, these systems continue to deteriorate and increase the drainage issues that the community experiences. We are continuing to shift to a more purposeful, system wide maintenance program.

**Weather Dependent.** The majority of projects require dry weather for construction. Any rain event could delay a project from a day to a week and beyond. 2014 was a very wet season preventing quick progress.

## ***Initiatives for 2026***

- Coordination with the Utility Department to televise storm pipes 2 years ahead of Road Projects.
- Continue to Complete drainage list projects to maintain overall backlog of no more than 2 years.
- Potential for contracting out City-wide BMP Inspection and Maintenance for WDNR WPDES permit compliance.
- Evaluation of Lincoln Avenue Bioswales.
- Continued implementation of a drainage system tracking and maintenance program.

---

---

## ***Revenue Enhancements***

- Continue to verify billing accuracies and to track and evaluate new development in order to maintain current and equitable storm water fee charges for all customers.

## ***IDENTIFIED PRIORITIZED BUDGET ISSUES (including CIP)***

### **ISSUE – WPDES Permit Compliance**

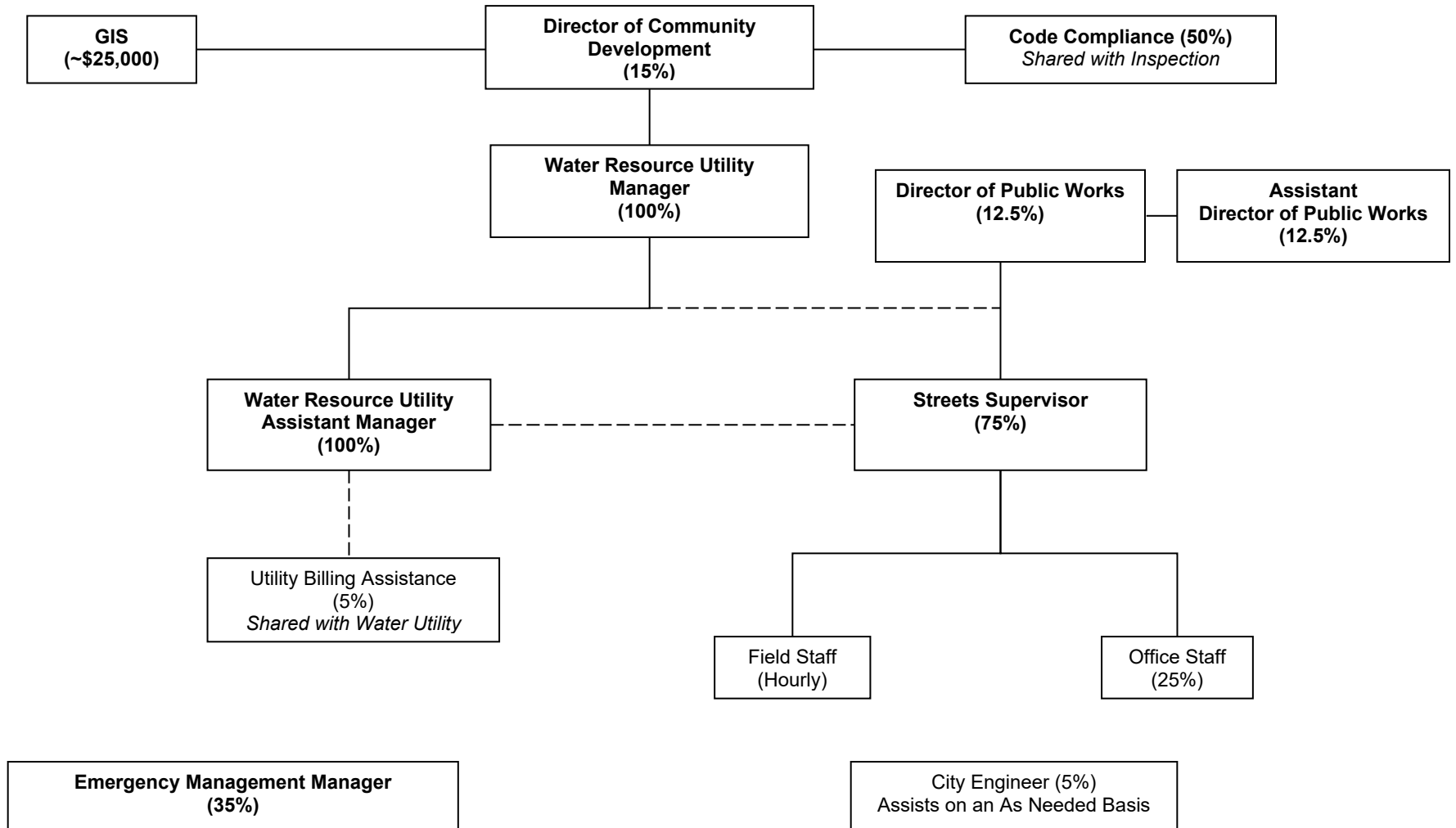
As we move forward with completing drainage and storm water projects, there is the goal of adding a water quality element to each project. The objective being to avoid the need for a large independent project directed solely at water quality.

Total Maximum Daily Loads (TMDL) will be the next permit compliance hurdle. To date we have not had to tackle this, but it will be coming shortly. At this time, we should continue to look for opportunities to improve water quality in every project.

### **ISSUE – Focus on Preventative Maintenance and System Inspection Increase**

The focus will be on completing inspections and required maintenance in coordination with road work projects so that they are completed before the road work occurs. The plan currently is to contract out only those projects that are needed so that, at the same time, we can begin to complete inspection of all storm water system components, and repair or replacement of defects in the system the year before road construction is scheduled. Some of this work may need to be contracted out, depending upon the availability of Streets Department crews. Documentation of these activities are monitored in GIS/Cartegraph with the future intent of having preventative maintenance scheduled once a base line is established.

# 2026 WATER RESOURCE MANAGEMENT DEPARTMENTAL ORGANIZATION CHART



**EXECUTIVE BUDGET SUMMARY  
YEAR 2026  
OFFICE OF THE WATER RESOURCE MANAGEMENT UTILITY**

REVENUES										
ORG	Object		2023	2024	2025	2025	2025	2026	COMMITTEE	2026
			ACTUAL	ACTUAL	ADOPTED	6 MONTHS	EST TOTAL	PROPOSED	CHANGES	ADOPTED
		OPERATING REVENUES:								
70710000	46110	RESIDENTIAL	759,248	760,615	762,000	380,789	762,000	762,500		762,500
70710000	46120	COMMERCIAL	739,545	744,601	745,000	373,046	746,000	750,000		750,000
70710000	46130	INDUSTRIAL	187,938	193,764	195,000	96,945	193,900	194,000		194,000
70710000	46140	PUBLIC	86,604	85,898	86,000	42,960	85,950	86,000		86,000
70710000	46200	PENALTIES	17,845	17,468	16,500	3,438	17,500	17,500		17,500
70710000	46301	CONTRACT WORK	-	1,260	-	-	-	-		-
70710000	46302	WATER QUALITY FEE	-	-	-	-	-	-		-
			-----	-----	-----	-----	-----	-----	-----	-----
		SUBTOTAL-OPERATING REVENUES	1,791,180	1,803,605	1,804,500	897,178	1,805,350	1,810,000	-	1,810,000
		NON-OPERATING REVENUES:								
70711000	41000	GRANTS-FEDERAL			-		-	-		-
70711000	41010	GRANTS-STATE			-	5,600	5,600	-		-
70711000	41020	GRANTS-LOCAL			-		-	-		-
70711000	44062	CLAIM SETTLEMENT	17,414	-						
70711000	47000	INTEREST INCOME	192,958	232,910	180,000	118,201	230,000	200,000		200,000
70713000	42400	CAPITAL CONTRIBUTION	1,500,957	-						-
			-----	-----	-----	-----	-----	-----	-----	-----
		SUBTOTAL-NON-OPERATING REVENUES	1,711,329	232,910	180,000	123,801	235,600	200,000		200,000
		TOTAL REVENUES	3,502,509	2,036,515	1,984,500	1,020,979	2,040,950	2,010,000		2,010,000

**EXECUTIVE BUDGET SUMMARY  
YEAR 2026  
OFFICE OF THE WATER RESOURCE MANAGEMENT UTILITY**

EXPENSES										
			2023	2024	2025	2025	2025	2026	COMMITTEE	2026
			ACTUAL	ACTUAL	ADOPTED	6 MONTHS	EST TOTAL	PROPOSED	CHANGES	ADOPTED
		OPERATING EXPENSES:								
70710710	50010	SALARY-FULLTIME	296,657	214,495	381,883	113,847	381,883	401,295		401,295
70710710	50020	SALARY-PARTTIME			-		-	-		-
70710710	51010	RETIREMENT	27,578	13,770	26,541	7,912	26,541	28,892		28,892
70710710	51020	FICA	21,222	15,976	29,215	8,434	29,215	30,699		30,699
70710710	51030	HEALTH INSURANCE	65,198	43,277	87,966	15,784	87,966	73,337		73,337
70710710	51060	LONG TERM DISABILITY	226	133	270	44	270	212		212
70710710	51065	VISION/DENTAL INS	1,293	884	1,605	367	1,605	1,849		1,849
70710710	51070	LIFE INSURANCE	543	376	749	210	749	788		788
70710710	52070	PRE-EMPLOYMENT TEST			-		-	-		-
70710710	52080	AUDIT FEES	2,000	2,000			-			
70710710	52110	ADMIN CHARGE-UTILITY	22,650	21,000	22,650	-	22,650	22,650		22,650
70710710	52130	ADMIN CHARGE-STREETS LABOR	383,510	290,770	309,500	117,100	309,500	309,500		309,500
70710710	52130	ADMIN CHARGE-STREETS EQUIP	65,500	65,500	65,500	32,750	65,500	65,500		65,500
70710710	52030	CONTRACTED SERVICES/GIS/CARTE	22,849	29,766	45,000	36,373	45,000	55,000		55,000
70710710	53040	TELEPHONE/CELL PHONE	1,087	1,095	3,000	370	3,000	3,000		3,000
70710710	54020	R&M VEHICLES	5,989	3,191	15,000	3,342	15,000	15,000		15,000
70710710	54060	PRINTING/ADVERTISING		-	1,000		1,000	1,000		1,000
70710710	54120	OFFICE SUPPLIES	2,428	1,877	2,000	894	2,000	2,000		2,000
70710710	54170	POSTAGE	17,120	18,697	18,000	9,603	18,000	18,000		18,000
70710710	54190	GAS, OIL LUBRICANTS	1,486	3,967	12,000	6,280	12,000	12,000		12,000
70710710	54275	CITY CENTER HOA		-	5,300	-	5,300	5,300		5,300
70710710	54300	CONFERENCE/TRAINING/MEETING	640	296	6,000	1,095	6,000	6,000		6,000
70710710	54320	MILEAGE	68	-	500	-	500	500		500
70710710	54350	PROMOTION/RELATIONS		6,984	7,000	13,485	7,000	7,000		7,000
70710710	54420	LANDSCAPING	14,071	12,221	17,000	6,519	17,000	17,000		17,000
70710710	54440	STONE	2,605	10,177	15,000	2,471	15,000	15,000		15,000
70710710	54480	CULVERTS/DRAINTILE	195,951	123,723	90,000	46,539	90,000	90,000		90,000
70710710	53030	SPOILS DISPOSAL	3,847	9,357	10,000	1,973	10,000	10,000		10,000
70710710	59021	STREAMBANK STABILIZATION			-		-	-		-
70710710	59010	EQUIPMENT	1,325		-		-	-		-
70710710	59060	DRAINAGE	27,213	26,819	117,000	6,403	117,000	117,000		117,000
70710710	56190	BAD DEBT			0			-		-
		SUBTOTAL-OPERATING EXPENSES	1,183,056	916,351	1,289,679	431,795	1,289,679	1,308,522		1,308,522
		NON-OPERATING EXPENSES:								
70710711	58010	DEPRECIATION	561,679	575,584	565,000	94,167	562,000	565,000		565,000
70710711	57015	LOSS ON DISPOSAL		-	-	-	-	-		-
70711000	52050	GRANT PROJECTS			-	-	-	-		-
70711714	58040	AMORTIZATION		-	-	-	-	-		-
70711713	57010	INTEREST EXPENSE	3,162	1,513	-	0	-	-		-
70711713	60001	ARBITRAGE EXPENSE		-	-	-	-	-		-
		SUBTOTAL-NON-OPERATING EXPENSES	564,841	577,097	565,000	94,167	562,000	565,000		565,000
		TOTAL EXPENSES	1,747,897	1,493,448	1,854,679	525,962	1,851,679	1,873,522		1,873,522

## 2026 Budget Overview

### BUDGET SUMMARY

	2023 ACTUAL	2024 ACTUAL	2025 ADOPTED	2025 6 MONTHS	2025 EST TOTAL	2026 PROPOSED
SUBTOTAL-OPERATING REVENUES	1,791,180	1,803,605	1,804,500	897,178	1,805,350	1,810,000
SUBTOTAL-NON-OPERATING REVENUES	1,711,329	232,910	180,000	123,801	235,600	200,000
<b>TOTAL REVENUES</b>	<b>3,502,509</b>	<b>2,036,515</b>	<b>1,984,500</b>	<b>1,020,979</b>	<b>2,040,950</b>	<b>2,010,000</b>
SUBTOTAL-OPERATING EXPENSES	1,183,056	916,351	1,289,679	431,795	1,289,679	1,308,522
SUBTOTAL-NON-OPERATING EXPENSES	564,841	577,097	565,000	94,167	562,000	565,000
<b>TOTAL EXPENSES</b>	<b>1,747,897</b>	<b>1,493,448</b>	<b>1,854,679</b>	<b>525,962</b>	<b>1,851,679</b>	<b>1,873,522</b>
<b>TOTAL REV-EXP</b>	<b>1,754,612</b>	<b>543,067</b>	<b>129,821</b>	<b>495,017</b>	<b>189,271</b>	<b>136,478</b>

### SALARY & FRINGES SUMMARY

	Item	2025 ADOPTED	2025 EST TOTAL	2026 PROPOSED	+/-
50010	SALARY-FULLTIME	381,883	381,883	401,295	19,412
50020	SALARY-PARTTIME	-	-	-	-
51010	RETIREMENT	26,541	26,541	28,892	2,351
51020	FICA	29,215	29,215	30,699	1,484
51030	HEALTH INSURANCE	87,966	87,966	73,337	(14,629)
51060	LONG TERM DISABILITY	270	270	212	(58)
51065	VISION/DENTAL INS	1,605	1,605	1,849	244
51070	LIFE INSURANCE	749	749	788	39
52070	PRE-EMPLOYMENT TEST	-	-	-	-
52110	ADMIN CHARGE-UTILITY	309,500	22,650	22,650	-
52130	ADMIN CHARGE-STREETS LABOR	65,500	309,500	309,500	-
52131	ADMIN CHARGE-STREETS EQUIP	45,000	65,500	65,500	-
	<b>TOTAL</b>	<b>948,229</b>	<b>925,879</b>	<b>934,722</b>	<b>8,843</b>

### STAFFING LEVELS

Position	2023 Actual	2024 Actual	2025 Budget	2026 Proposed
DCD Director	15%	15%	15%	15%
Administrative	25%	25%	25%	25%
DPW Director	12.5%	12.5%	12.5%	12.5%
Assistant DPW Director	37.5%	37.5%	12.5%	12.5%
Emergency Management Manager	0.0%	0.0%	35%	35%
Streets Manager	50%	50%	75%	75%
Code Compliance	50%	50%	50%	50%
Division Engineer	75%	75%	100%	100%
Water Resource Engineer	100%	100%	100%	100%
Land & Water Resource Specialist	0%	0%	0%	0%
City Engineer	5%	5%	5%	5%
<b>Total</b>	<b>3.7</b>	<b>3.7</b>	<b>4.3</b>	<b>4.3</b>

**52030  
Contracted Services**

This is the amount to cover anticipated and unanticipated professional services from other City Departments and outside sources associated with design and policy as related to storm water issues. Includes GIS and Cartegraph for ~\$45,000.

- Contracted Services ..... \$10,000
- Cartegraph ..... \$10,000
- GIS ..... \$35,000
- Total ..... \$55,000**

**52110  
Administration Charge Utility**

This is the amount the Water Utility would be reimbursed for the billing clerk processing the Water Resource Management Utility charges on the Water Utility bill and the amount reimbursed to the Utility for storm system Utility locates.

- 5% of Part time Billing Clerk Salary and Fringe..... \$ 2,650
- Utility Locate Reimbursement ..... \$ 20,000
- Total ..... \$ 22,650**

**52130  
Administration Charge City Streets**

Labor costs associated with Water Resource Utility projects.

- Streets Department Labor and fringe ..... \$271,120
- 50% Operator Position ..... \$ 38,380
- Total ..... \$ 309,500**

**52130  
Equipment Maintenance/Replacement**

This is the amount the City Street Department would be reimbursed for their equipment and machinery usage.

- Equipment and machinery usage..... \$ 65,500

**53030  
SPOILS DISPOSAL**

This account will be used to pay for disposal of spoil material from ditching projects and street sweeping operations.

2025 REQUEST	\$ 10,000
2026 REQUEST	\$ 10,000
+/-	\$ -

**53040  
Telephone/Cell Phone**

This is the for Telephone/Cell Phone expenses.

- Telephone/Cell Phone..... \$3,000

**54020  
R&M VEHICLES**

Street Sweeper & Hydroseeder Maintenance and Supplies.

2025 REQUEST	\$	15,000
2026 REQUEST	\$	15,000
+/-	\$	-

**54060  
PRINTING & ADVERTISING**

This is the amount for publication of legal notices and printing of contract documents.

2025 REQUEST	\$	1,000
2026 REQUEST	\$	1,000
+/-	\$	-

**54120  
OFFICE SUPPLIES**

This amount is for the typical supplies such as paper, envelopes, ink, glue, pencils, scissors, paper clips, stapler and staples, etc. that will be used in the billing and operations of the Storm Water Utility.

2025 REQUEST	\$	2,000
2026 REQUEST	\$	2,000
+/-	\$	-

**54170  
POSTAGE**

This is the amount for printing quarterly Water Resource Utility bills, and for the additional postage necessary for sending bills to the customers who are not currently on the Water Utility billing system.

2025 REQUEST	\$	18,000
2026 REQUEST	\$	18,000
+/-	\$	-

**54190  
GAS, OIL, AND LUBRICANTS**

Supplies are for the Street Sweeper & Hydroseeder.

2025 REQUEST	\$	12,000
2026 REQUEST	\$	12,000
+/-	\$	-

**54275  
CITY CENTER HOA**

This is the City's share for taxes and stormwater management for the City Center Association which we are a member due to lands we own in City Center.

2025 REQUEST	\$	5,300
2026 REQUEST	\$	5,300
+/-	\$	-

**54300  
CONFERENCES/TRAINING/MEETING**

This amount is to update staff on code regulations and new technology including a National Conference on system design & modeling/StormCon.

2025 REQUEST	\$	6,000
2026 REQUEST	\$	6,000
+/-	\$	-

**54320  
MILEAGE**

This amount is for reimbursement of mileage.

2025 REQUEST	\$	500
2026 REQUEST	\$	500
+/-	\$	-

**54350  
PROMOTIONS/RELATIONS**

The promotion fund is for the educational requirements of the WPDES Permit and any additional information in storm water notices. Currently contracted with RootPikeWIN

2025 REQUEST	\$	7,000
2026 REQUEST	\$	7,000
+/-	\$	-

**54420  
LANDSCAPING MATERIALS**

This account will pay for the landscaping of storm water related projects (i.e. sod, seed, mulch, fertilizer, riprap, new technology for stabilization etc.).

2025 REQUEST	\$	17,000
2026 REQUEST	\$	17,000
+/-	\$	-

**54440  
STONE**

This account will pay for backfill material used in the replacement or repair of culvert pipes and storm sewers.

2025 REQUEST	\$ 15,000
2026 REQUEST	\$ 15,000
+/-	\$ -

**54480  
CULVERTS/DRAIN TILE**

This account will be used to pay for material costs of culvert pipe, drain tile, flared end sections, replacement grates, masonry endwalls and other materials used in the replacement and repair of storm sewers and culvert pipes.

2025 REQUEST	\$ 90,000
2026 REQUEST	\$ 90,000
+/-	\$ -

**59060  
DRAINAGE**

- Illicit Discharge Screening ..... \$ 10,000
- City Wide Storm Water Permit Fee ..... \$ 7,000
- Contracted Drainage List Projects and System Inspection..... \$ 100,000
- Total..... \$ 117,000**

2025 REQUEST	\$ 117,000
2026 REQUEST	\$ 117,000
+/-	\$ -

**58010  
DEPRECIATION**

Depreciation of Fixed Assets.

2025 REQUEST	\$ 565,000
2026 REQUEST	\$ 565,000
+/-	\$ -

**58040  
AMORITIZATION**

Allocation of Bond Issue Costs.

2025 REQUEST	\$ -
2026 REQUEST	\$ -
+/-	\$ -

**57010  
INTEREST EXPENSE**

Interest of Borrowing for Storm Water CIP Projects.

2025 REQUEST	\$ -
2026 REQUEST	\$ -
+/-	\$ -